

Ready, Set, Sequence...GO!

For equipment to work, a specific sequence of events needs to happen. Number each of the events in the order needed to start a skid steer.



Safety circuit closed



Turning key switch



Starter powered



Power from battery to switch



Power to fuse in fuse box

Mixed Signals

Ag Technicians need to be able to identify all the symbols that represent parts of an electrical system. Unscramble the words to name each of the electrical system symbols.



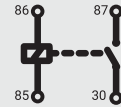
CSITHW



DGUONR



PERWO



AYERL



IOESSRTR



DDEIO

Positively 4 Kids!

Spring 2020 Vol. 3 No.1

Electrical Match Up

To find and fix a problem with equipment, Ag Technicians need to be able to identify all the parts of an electrical system. Match the photos to the correct piece of an electrical system.



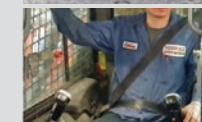
Farmers rely on equipment to help them complete their work on the farm. When a piece of equipment isn't working, they need Ag Technicians. An Ag Technician is like a detective searching for clues to find a problem and fix it. Do you like solving problems? Did you know you could learn this trade with on the job training through a paid apprenticeship?



1. a. Battery



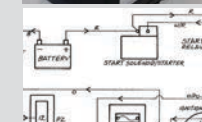
2. b. Completed Safety Circuit



3. c. Good Voltage Reading



4. d. Starter



5. e. Wiring Schematic



6. f. Fuse



7. g. Key Switch

Win This Book

www.pfb.com/4Kids

- Enter the free book drawing
- Find answers to all activities
- Answer the P4K! Ag Question
- Learn more about farm equipment



Last Issue Winner
Heather Heddeman
Erie County

Provided by

Pennsylvania Friends of Agriculture Foundation™
A Charitable Organization Supported by Pennsylvania Farm Bureau

Sponsored by

Northeast Equipment Dealer Association, Inc.
nedaapprentice.com

Ag Technicians...Agriculture's Equipment Detectives

1. Problem:

My skid steer won't start! Trace the path to discover the steps the Ag Tech will take to solve the problem. Scan the QR codes to see an Ag Tech at work.



2. Ag Tech starts the search for the problem by trying to duplicate the problem or fault. The seatbelt must be buckled to complete the safety circuit.



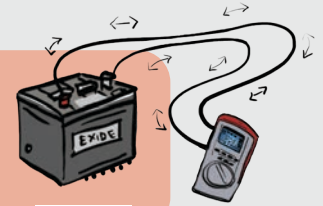
3. Will the engine turn over or try to start?



5. Battery has good voltage. Test voltage at starter.



4. Engine did not turn over. Test the battery.



6. Starter has good voltage. Test power at the key switch with safety circuit completed.



8. Find fuse box and test fuses until one is found that doesn't have power through it. Replace the fuse.



7. Problem is likely a fuse, but which one? Check manual for wiring schematic.



9. Verify the problem is fixed. Skid steer starts. The farmer can get back to work!

