



LINKS TO AGRICULTURE



Pennsylvania Friends of Agriculture Foundation™
 A Charitable Organization Supported by
 Pennsylvania Farm Bureau

Fungi Fun

Mushrooms are valuable to Pennsylvania because we are the top mushroom producers in the United States! Mushrooms are unique and different from plants. First and most importantly, mushrooms are NOT plants. They are a member of kingdom fungi. Other members of The Fungi Kingdom besides mushrooms are yeasts and molds.

Kingdom Classifications

| Animal | Fungi | Plant |
|---|--|--|
| <ul style="list-style-type: none"> • Largest kingdom • Feeds on other organisms for food • Multicellular • 1 million known species in this kingdom • Within their kingdom they are characterized by their movement | <ul style="list-style-type: none"> • Most are multicellular, some single celled • They obtain food by absorbing plants decaying in the soil • Contains mushrooms, mildew, mold, and yeast | <ul style="list-style-type: none"> • Second largest kingdom • Make their own food through photosynthesis • Multicellular • Second largest kingdom • Contains all flowering plants, ferns, and mosses. |

How to Windowsill Compost

1. Put your food wastes in your jug
2. Sit your jug on the window sill with the blinds open
3. One time per week shake the jug and add a little water if the compost is dry
4. In 4-6 weeks your compost will be ready to use

Remember: During warmer seasons your compost will be ready sooner!

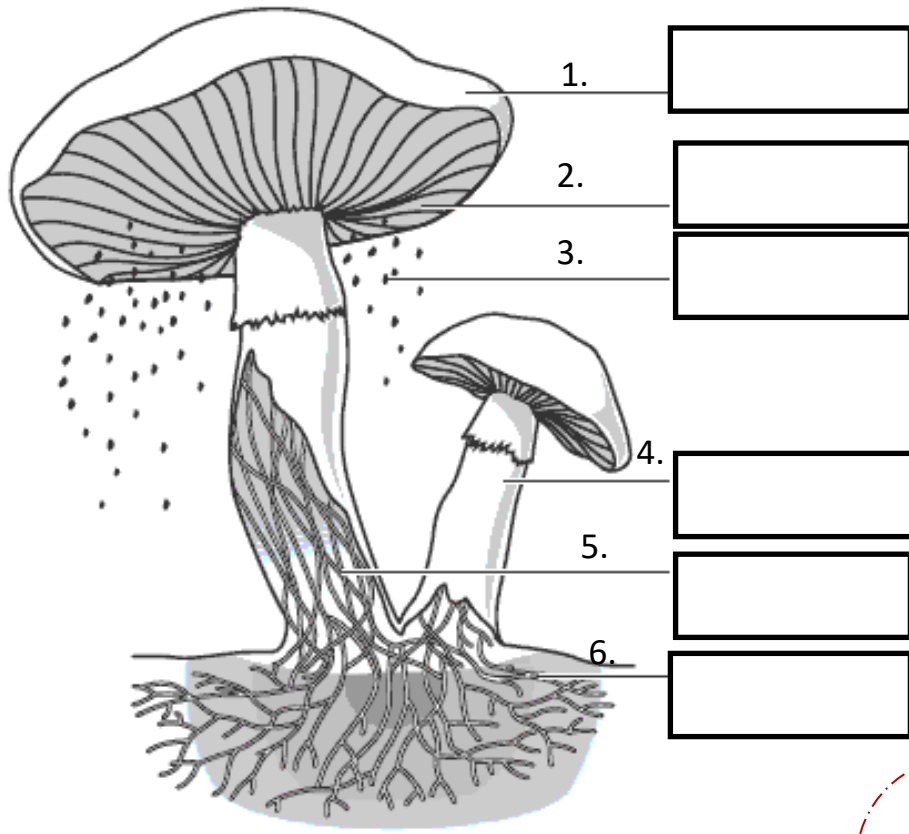
Windowsill Composting

Before Starting:

- ⇒ Locate a gallon jug with a lid
- ⇒ Decide if you want to gather yard or food wastes
- ⇒ Gather whichever waste you chose into a pile.

Yard Waste

| Do's | Don'ts | Do's | Don'ts |
|---|--|---|---|
| <ul style="list-style-type: none"> - Brown and green materials - Paper - Wood chips - Grass clipping - Dried up leaves - Food items | <ul style="list-style-type: none"> - Plants and shrubs that are still alive | <ul style="list-style-type: none"> - Vegetables - Fruit - Coffee grinds - Egg shells - Tea bags - Bread/ grains - Corn Cobs -Melon rinds -Banana peels | <ul style="list-style-type: none"> - Dairy - Meat - Animal waste |



Match the number to the part's function by writing the number next to the correct definition!

___ Tiny part of the mushroom that produces new mushrooms

___ The button or umbrella like part of the mushroom that supports the reproduction process for the mushroom

___ Short stem-like part of the fungus that supports the cap

___ Underground mass of interwoven filaments that collect the nourishment for the mushroom

___ The vertical plates arranged radially on the underside of the mushroom caps that form the spores

___ A branching filamentous structure that together make-up mycelium

Gills Stalk/Stipe Word Bank
 Spores Hyphae Mycelium Cap

(Labeling) 1. Cap. 2. Gills 3. Spores 4. Stalk/Stipe 5. Mycelium 6. Hyphae

(Definitions: Top to Bottom)

3,1,4,5,2,6

Answers:

1. Poisonous

2. Edible

3. Edible

4. Poisonous

Poisonous or Edible?

1. _____

2. _____

3. _____

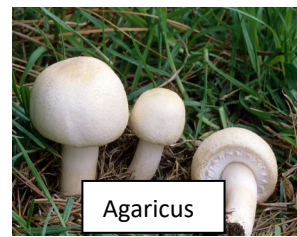
4. _____

Fly Amanita

Agaricus

Shiitake

Muscarine





Career Corner

Microbiologist - A field developed due to the microscope, microbiologists research microorganisms to study their behaviors, physiology, and interactions with the environment. They work with bacteria and fungi in laboratory settings using extensive and up-to-date technology.

How Microbiologists Benefit Agriculture:

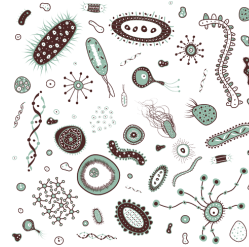
- Study organisms that are harmful to ag

Microbiologists Study:

- Chemistry
- Microbiology



SCAN ME



Thank you to our major sponsors

- | | |
|---|---------------------------------------|
| ◇ American Agriculturalist Foundation | ◇ Lazy Hog Farm |
| ◇ AmerisourceBergen | ◇ McCormick Family Foundation |
| ◇ Bayer | ◇ Nationwide |
| ◇ Corteva Agriscience | ◇ Northeast Agricultural Foundation |
| ◇ Dick and Shelva Mains Fund | ◇ Pennsylvania Farm Bureau |
| ◇ Farm Credit Foundation for Agricultural Advancement | ◇ PA Beef Council |
| ◇ First Citizens Community Bank | ◇ Pennsylvania Dairymen's Association |
| ◇ Glatfelter Family Foundation | ◇ Pennsylvania Soybean Board |
| ◇ Kathy Berry Agency | ◇ Pennian Bank |
| ◇ Land O' Lakes | ◇ PNC Bank |

Farm Facts



- 1 acre can produce 1 million pounds of mushrooms
- Potting soil is recycled soil from harvested mushrooms
- Mushrooms contain Vitamin D which helps to build strong bones.
- 400 million pounds of mushrooms are grown in Chester County every year.

Did you know....

- Mushrooms are vegetables
- You can not eat all mushrooms
- There are 8 types of mushrooms you can eat: *Agaricus, Maitake, Oyster, Crimini, Shiitake, Beech, Portabella, and Enoki*



pfbfriends.com



@PAFriendsOfAg



@pafriendsofagriculture



@PAFriendsOfAgriculture